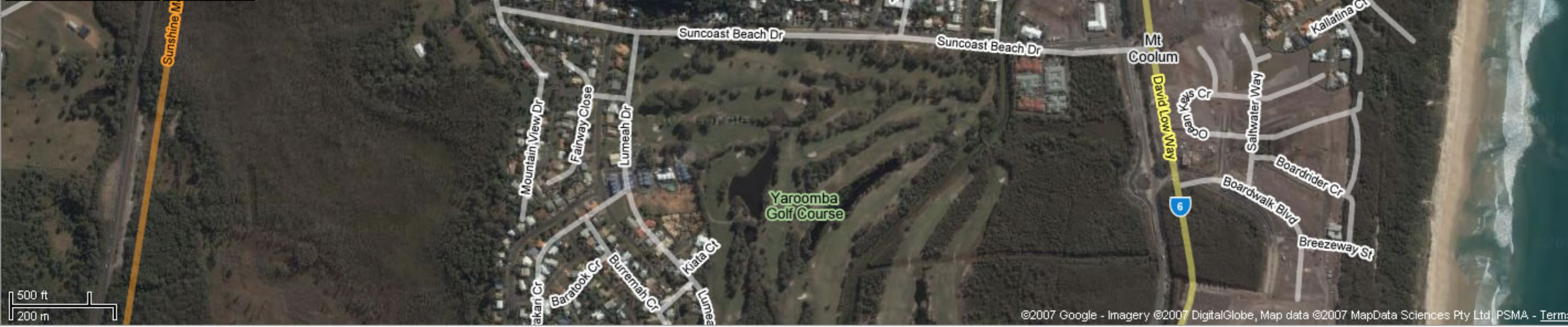
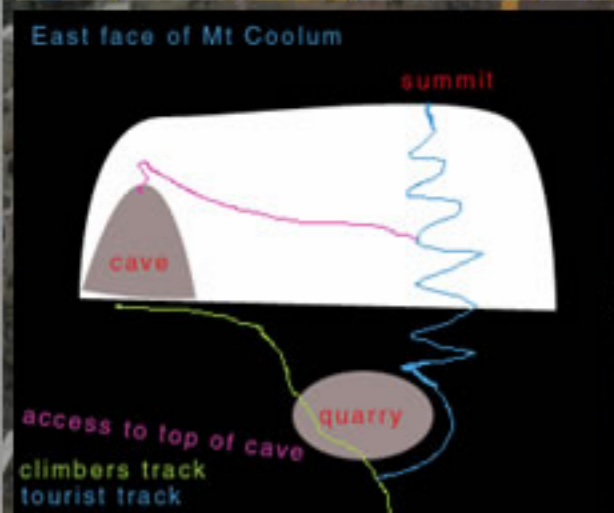
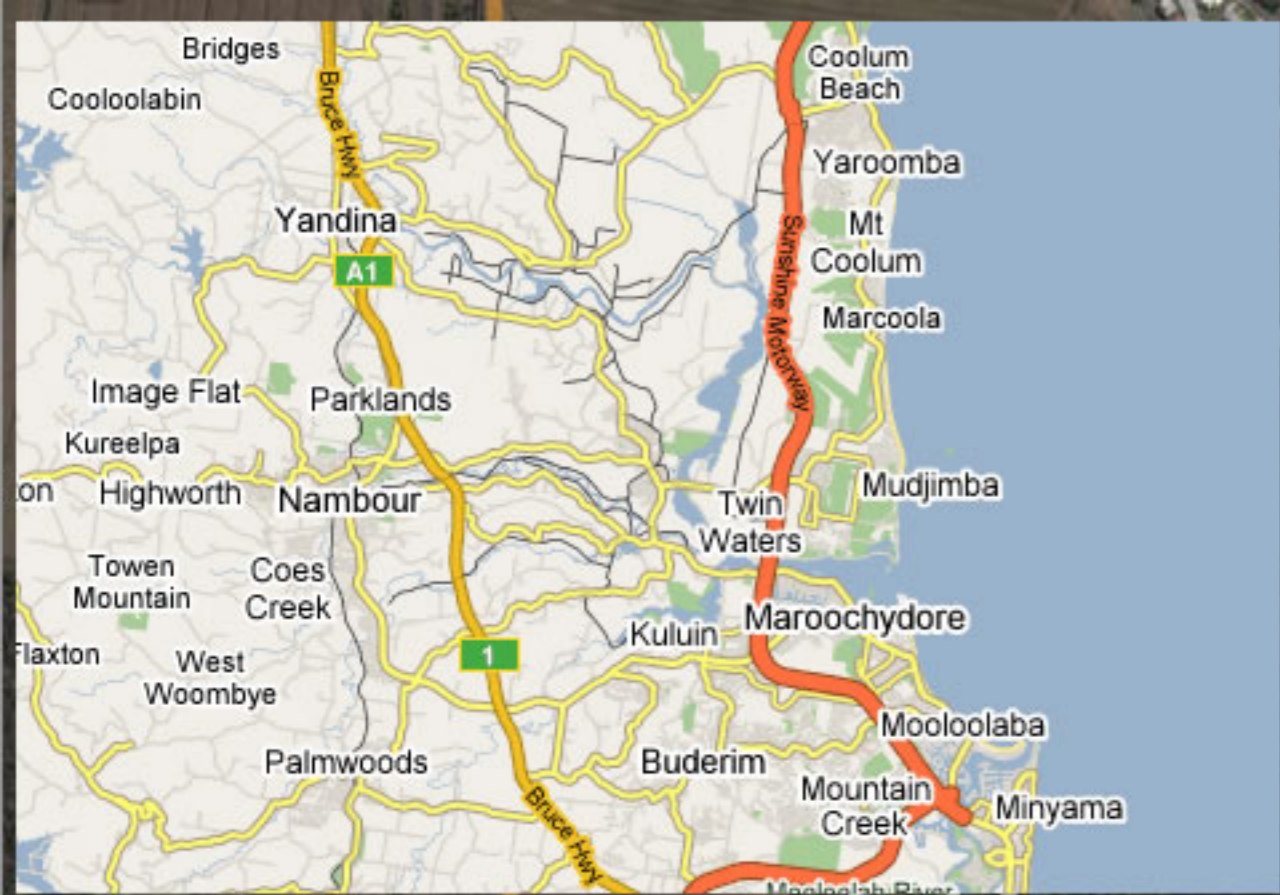




mt coolum climbing guide



Access

One and a half hours north of Brisbane. Up the Bruce Highway. Exit L and under after the Ettamogah Pub onto the Sunshine Coast Motorway. Nearing Mooloolaba, take the Noosa exit (not Mooloolaba), pass Maroochydore, over the river, exit L and under onto the David Low Way passing the airport. See Mt Coolum ahead. Turn L on Quarry Rd, one street before Hyatt Coolum. Follow your nose and park in the main National Park carpark. Walk up the hikers trail for about 50m until it goes hard R. Don't. Go L on a small foot track, skirting the quarry on the L. Keep walking up and L to huge cave (10 minutes tops).

Crag tips

- The crag is in shade from 9:00am. The best climbing is still in cooler weather though, because of the slippery nature of the rock.
- Sanity tip: View the frictionless rock as a challenge good technique can overcome rather than a hindrance.
- Nearly all routes remain dry even in heavy rain.
- A stick clip is a must for most of the routes.
- Take your oldest rope and a rope tarp.

Sensitivity issues

- This is a National Park. Rangers do not want climbing here. Be aware of this.
- There was a furore a few years ago about the bolts.
- The area is very touristy. If walkers wander up into the cave be friendly and say hello.
- Houses are very near the cave. Noise travels. Keep noise down. No loud swearing when you slip off.

New routes

In the interests of safety and longevity, the crag has now been designated glue-in only. Expansion bolts with fixed hangers simply do not last here, even 316 stainless. Because of this, new routes take a lot of time and effort to establish (several days). It is intended that old routes will

be rebolted over time. Please do not equip any new routes with anything other than glue-in rings or U bolts.

Route guide

From left to right in the cave.

1. *** Ultraviolet 15m 25**
Accessed by climbing RA or FIHP to rope traverse. Traverse all the way L to belay. Up from here.
J.J. O'Brien 13/1/2008
2. **Name to come 20m 26**
Frey Yule 2008
3. **Relative Affection 18m 23**
Stick-clip start, monkey work straight off the ground then some slopey weirdness which looks easy from the cheap seats. Lower off. Seven FH's. Trust your feet or perish.
J.J. O'Brien, Ambor Collins 2006
4. ***** Black Leather Dungarees 20m 26**
Start at RA's anchor. Steep stuff straight above the belay. Traverse L under roof to wacky "slab" and a rest above. Huge jugs and horns comprise the final third. 11 U-bolts to DUBB. Second to clean. Rope length warning: It is more than 30m from anchor to ground. Suggestion: leader lowers, rope toss to pull back to belay, second to clean, lower second to ground, pull rope to start belay, rap off.
Lee Cujes, J.J. O'Brien 15/4/2007
5. **Friends in High Places 15m 20**
Stickclip. Starting on R is easier. Traversing under the bolt L adds a grade or two. Okay climbing on slippery rock. To anchors on the ledge on L. Probably the best warm-up here.
Liam O'Dea
6. ***** Gasoline Rainbow 15m 28**
Amazing climbing which is never too hard, but quite continuous! Start at the top of FIHP. Three RBs to unique cave move. Thug R to jutting horn. Breach "slab" above moving L to find some harder moves. A

traverse L, then finish on jugs. DUBB. Nine RBs. Lower-off into the ocean. Use 60m rope.
Lee Cujes, J.J. O'Brien 13/3/2007

7. **** Cleared for Takeoff 25m 26**
Start up TDLW for two FH's, then trend L up the ever steepening wall past some crazy looking horns. Established by Azza, probably first climbed by Simon
8. **The David Low Way 15m 18**
Like Woodridge, had a name change and a rebolt to hopefully generate more interest. As for the previous route then arc R across the slippery slab up R into the cave. You'll need a seconder to clean this route.
9. **** La Cucaracha Airhorns 12m 25**
From the belay on TDLW, up and out.
Gareth Llewellyn 11/11/07
10. **(Project – Gareth)**
11. *** The Antipump 10m 27**
Start at the Nick graffiti. Four RBs then finish up BBaJ. One big boulder problem with every move a hardie. The slot in the roof is perpetually damp and completely frictionless.
Frey Yule 2007
12. *** Beer, Boobs and Jerky 13m 24**
Up into the steep little cave, then across left to a hard move to gain the protruding jugs. Motor up the very overhanging arête on killer shark-fin jugs. About 8 bolts. Needs rebolting.
13. **** Hung Like a Fruit Bat 8m 25**
Up the bulby horns out the roof to nice anchors (have been replaced). Bolts a little hard to clip. Feet more important than hands on this one.
14. *** Three Men and a Ladder 12m 26**
Starts a few metres right of Hung Like a Fruit Bat. Stick clip. Jump start, up, then across the roof and finish at HLAFB chains. Five RB's.
Matt Eaton 2007

15. **** A Kneebar Too Far 12m 29**
Journey into Matt's obsession. Ringbolts starting just R of TMAAL. Extension is Matt's project.
Matt Eaton 18/8/2007
16. **(Project – Matt)**
Just R of AKTF. Keep off.
17. **** Ground Control 12m 27**
Batman start. Start from the second FH above the ring (actually the 4th bolt from ground). Avoids the fierce 'Evil Wears No Pants' boulder problem and well worth a visit. The climb officially starts from the two holds closest to the starting bolt (funky jam RH, shitty layaway LH) long steep moves lead up and L-wards with a few knee-bars and kung-fu yells providing some relief. (5 more FH's to the chains)
Adam Donoghue 12/07
18. **(Project – Evil Control – Open?)**
GC with the EWNP start included.
19. ***** Major Tom 15m 29**
Batman start. One of the best quality routes at Coolum. Start same holds as for GC....commencing countdown engines on..." Head up past knee-bar then veer R up the obvious line on stellar rock. Packs in four cruxy sections en route and the final moves keep you honest right to the massive jug.
Adam Donoghue 1/08
20. **(Project – Evil Tom – Open?)**
Major Tom with the EWNP start included.
21. **(Silly Project – Gareth)**
22. **(Project - Open)**
Abandoned project. Only partially bolted. Two ringbolts and a FH. Top needs doing. Will finish just L of SI's anchors.
23. **(Project – Spoonman DS – Gareth)**

The next five routes share the same start.

24. ***** Spoonman 20m 28**
Start as for SI, then bust out L.
Gareth Llewellyn 1/7/07
25. ***** Screaming Insanity 15m 26**
Really good climbing, with a hard bouldery start, loads of bolts, and excellent climbing. Must overhang about 8 metres. To clean, back-jump, then lower from mallion.
Establishment vision by Chris Coghill, FFA by Simon in late 90s.
26. ***** Wholly Calamity 20m 27**
This is the extension to Screaming Insanity. No harder, just pumpier! Two more bolts keep the lactic levels up. First to 100 laps of this wins.
Gareth Llewellyn 23/3/07
27. *** Crouching Tiger, Hidden Climber 15m 26**
Starting as for SI, step R on ramp and then blast the line above.
Frey Yule 1/4/2007
28. **Demolition Man 15m 23**
Not great. Start with the boulder problem start of SI, and then ramble easily up R to belay on a cool ledge in a really good position.
29. **(Project – Matt)**
Beyond horizontal, in the little cave.
30. **(Project – Ross)**
L-leading steepo line.
31. **** Weapon Of Choice 15m 28**
The line starting at ground level, 10m L of the R end of cave.
Gareth Llewellyn
32. **As Yet Unnamed 10m 25**
Gareth Llewellyn
33. *** Crazy Horny 10m 25**
Popular. Bouldery start then steep thuggery.
Gareth Llewellyn
34. *** Grazed Anatomy 15m 28**
Climb FMT past four bolts, then up past another five. At last bolt, mantle lip of cave and stand on top triumphant. Back-jump to clean.
Lee Cujes 30/3/08
35. **(Project – Frey's Direct)**
36. *** Full Metal Traverse 8m 27**
15 move traverse L along lip. Bouldery.
Frey Yule 09/2007
37. *** Has It Got A Chevy Motor? 12m 23**
Popular. Despite the grade, it still feels hard.
Gareth Llewellyn
38. **Yoink 10m 24**
On the very R end of the cave. FHs to lower-off. Awkward moves.
Established by Lee, climbed by Vickie

MT COOLUM TOPO

1	Relative Affection	23
2	The Dungers	26
3	Friends In High	20
4	Gasoline Rainbow	28
5	Cleared for Take	26
6	Short and Shit	18
7	The Antlipump	27
8	Beer Boobs & Je...	24
9	(Project - Gareth)	
10	Hung Like A...	25
11	Three Men and...	26
12	A Kneebaw Too...	29
13	(Project - Matt)	
14	(Project - Adam)	
15	(Project - Open)	
16	Spoonman	28
17	Screaming Ins.	26
18	Wholly Calamity	27
19	Crouching Tiger	26
20	Demolition Man	23
21	(Project - Gareth)	
22	(Project - Gareth)	
23	Full Metal Trav...	27
24	Yoink	24

